



BioStation 2

Fingerprint IP Access terminal



BioStation 2 incorporates the latest Suprema technology in a beautiful exterior. It combines a new powerful processor. Suprema's next generation optical sensor and improved fingerprint sensing & capturing algorithm to offer unrivaled performance. BioStation 2 provides users with instant authentication and rapid data transfer to manage high volume data with ease. It is ideal for applications that requires versatility without compromise in style and performance.

BioStation 2

Fingerprint IP Access terminal

Features



Instant Matching & Authentication
 • Improved matching algorithm, memory handling and powerful processor up to 20,000 matches per second



Rapid Data Transfer
 • Optimal data transfer between the server and the device



Expanded Memory Capacity
 • 1,000,000 fingerprint template



IP65 Certified Dust & Water Protection
 • Ideal for harsh environment and outdoor installation

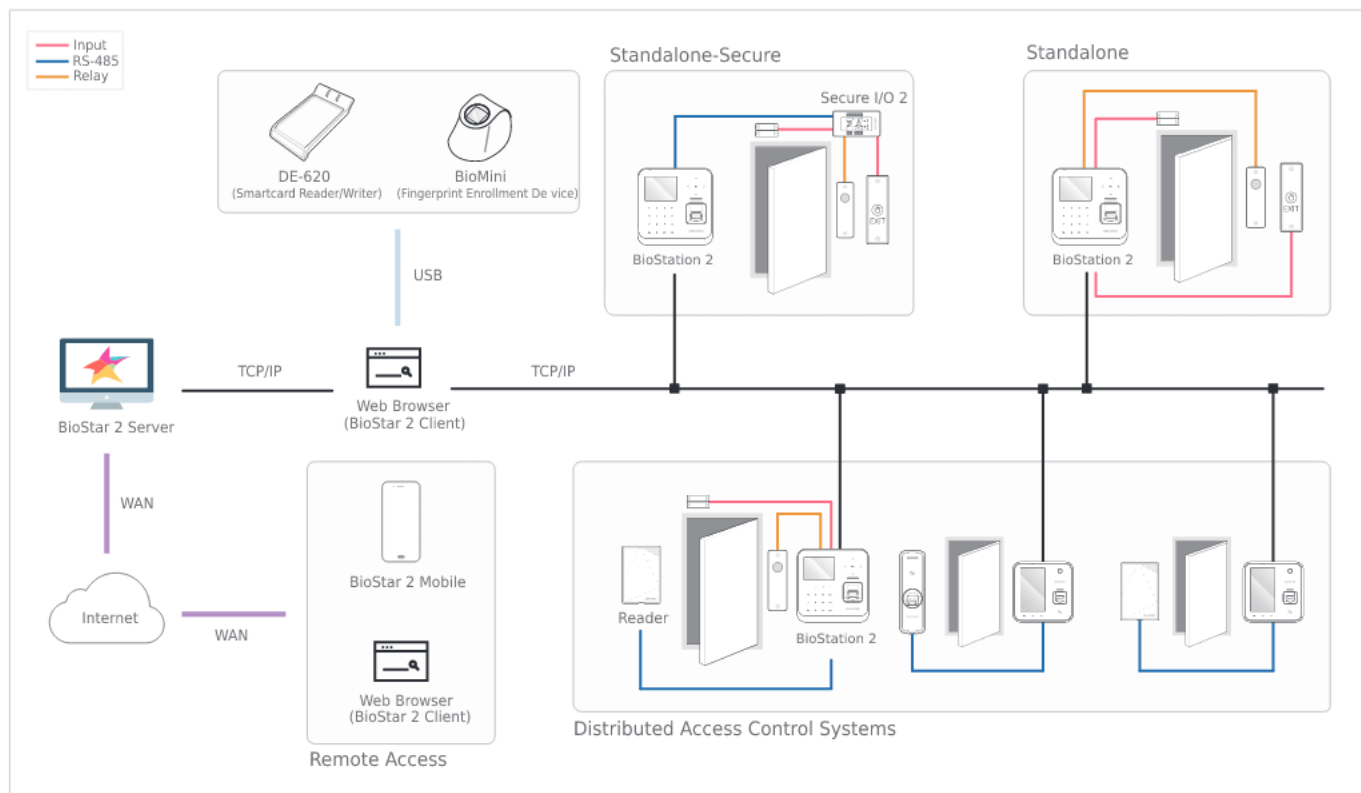


Versatile Interface
 • Built-in WiFi and Power-over-Ethernet functionality for wide range of installation options

Specifications

Biometric	Fingerprint								
Sensor Type	Optical Sensor (OP5)								
Template	SUPREMA / ISO 19794-2 / ANSI								
Extractor / Matcher	378								
LFD	MINEX certified and compliant								
RF Option	<table border="1"> <thead> <tr> <th>BS2-0EPW</th> <th>BS2-0HPW</th> <th>BS2-0IPW</th> <th>BS2-0MPW</th> </tr> </thead> <tbody> <tr> <td>125 KHz EM</td> <td>125 KHz HID Prox</td> <td>13.56MHz MIFARE, MIFARE Plus, DESFire/EV1, FeliCa, iCLASS SE/SR, NFC, ISO14443A/B, ISO15693</td> <td>13.56MHz MIFARE, MIFARE Plus, DESFire/EV1, FeliCa, NFC, ISO14443A, ISO15693</td> </tr> </tbody> </table>	BS2-0EPW	BS2-0HPW	BS2-0IPW	BS2-0MPW	125 KHz EM	125 KHz HID Prox	13.56MHz MIFARE, MIFARE Plus, DESFire/EV1, FeliCa, iCLASS SE/SR, NFC, ISO14443A/B, ISO15693	13.56MHz MIFARE, MIFARE Plus, DESFire/EV1, FeliCa, NFC, ISO14443A, ISO15693
BS2-0EPW	BS2-0HPW	BS2-0IPW	BS2-0MPW						
125 KHz EM	125 KHz HID Prox	13.56MHz MIFARE, MIFARE Plus, DESFire/EV1, FeliCa, iCLASS SE/SR, NFC, ISO14443A/B, ISO15693	13.56MHz MIFARE, MIFARE Plus, DESFire/EV1, FeliCa, NFC, ISO14443A, ISO15693						
CPU	1.0 GHz Single Core								
Memory	8GB Flash + 256MB RAM								
Max. User	500,000 (1:1), 20,000(1:N)								
Max. Template	1,000,000(1:1), 40,000(1:N)								
Max. Logs	3,000,000(text)								
LED	Multi-Color								
Sound	16-bit Hi-Fi								
Ethernet	Supported (10/100 Mbps, auto MDIX)								
RS-485	1ch Host or Slave (Selectable), OSDP								
Wiegand	V2.1.6								
TTL	1ch Input, 1ch Output								
Relay	2ch Inputs, 2ch Outputs								
PoE	1 Relay								
Tamper	Supported (IEEE 802.3af compliant)								
Power	Supported								
Operating Temperature	Voltage: DC 12V Current: Max. 1A								
Operating Humidity	-20°C ~ 50°C								
Dimensions (WxHxD, mm)	0% ~ 80%, non-condensing								
Unit Weight	142 x 145 x 45 mm								
Certificates	440g								

System Configurations



Sabacoinsa S.L.	Marvel Finances S.L.	Acces Time S.L.	Presencial Time S.L.	Presencial Time S.L.	Euskainsa S.L.
www.phuc.es	www.phuc.es	www.phuc.es	www.phuc.es	www.phuc.es	www.phuc.es
Tel: 937 299 860	Tel: 965 116 402	Tel: 911 255 168	Tel: 954 184 366	Tel: 963 210 601	Tel: 944 410 383
08210 Barcelona	03540 Alicante	28050 Madrid	41927 Sevilla	46020 Valencia	48013 Bilbao